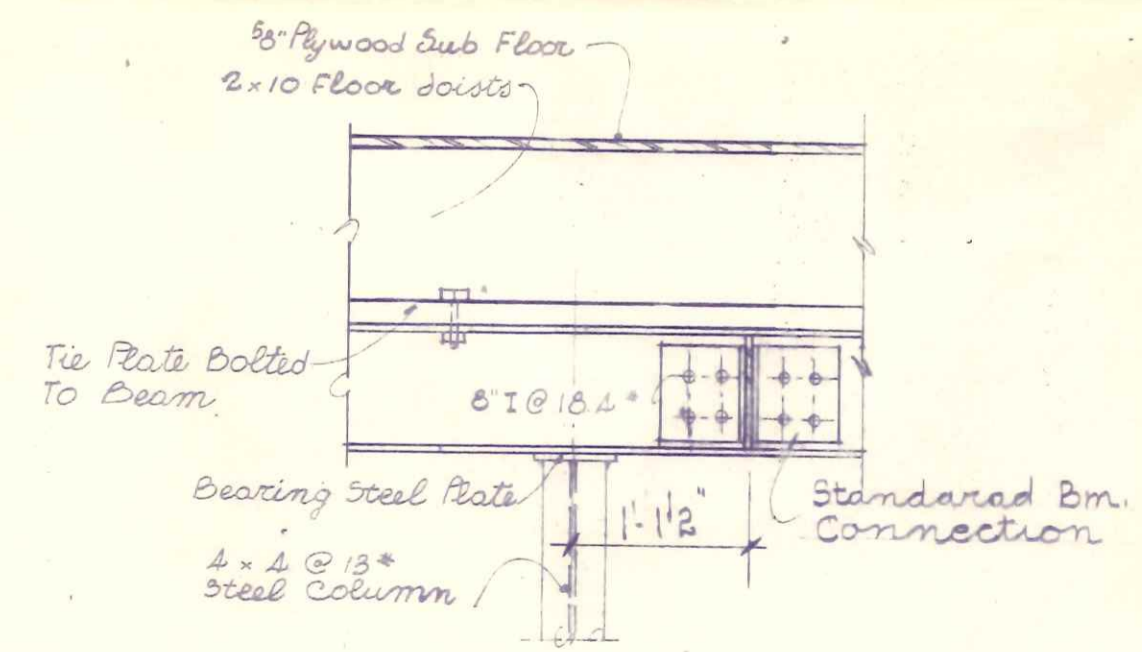
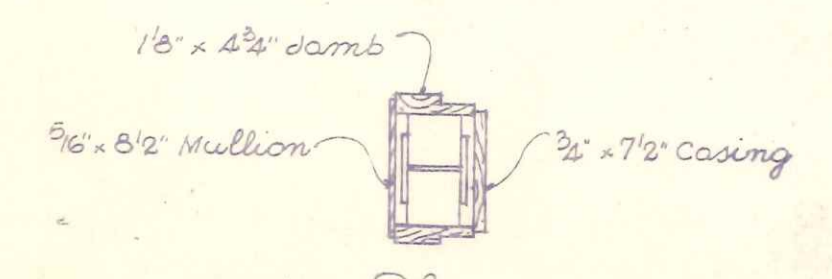


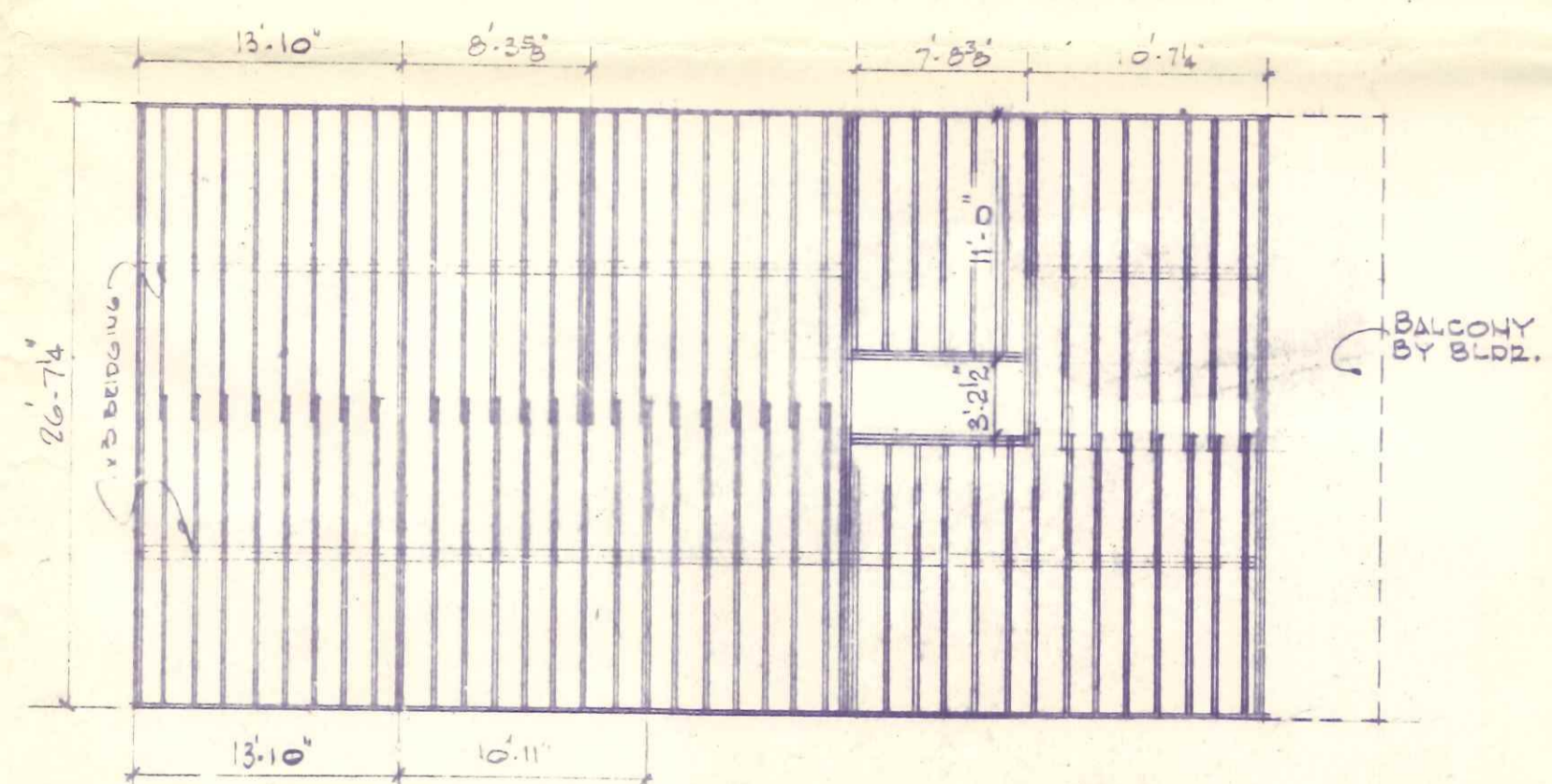
BASEMENT FOUNDATION
SCALE: 1/2" = 1'-0"



Elevation



Plan
Detail "A"
Scale: 1" = 1'-0"

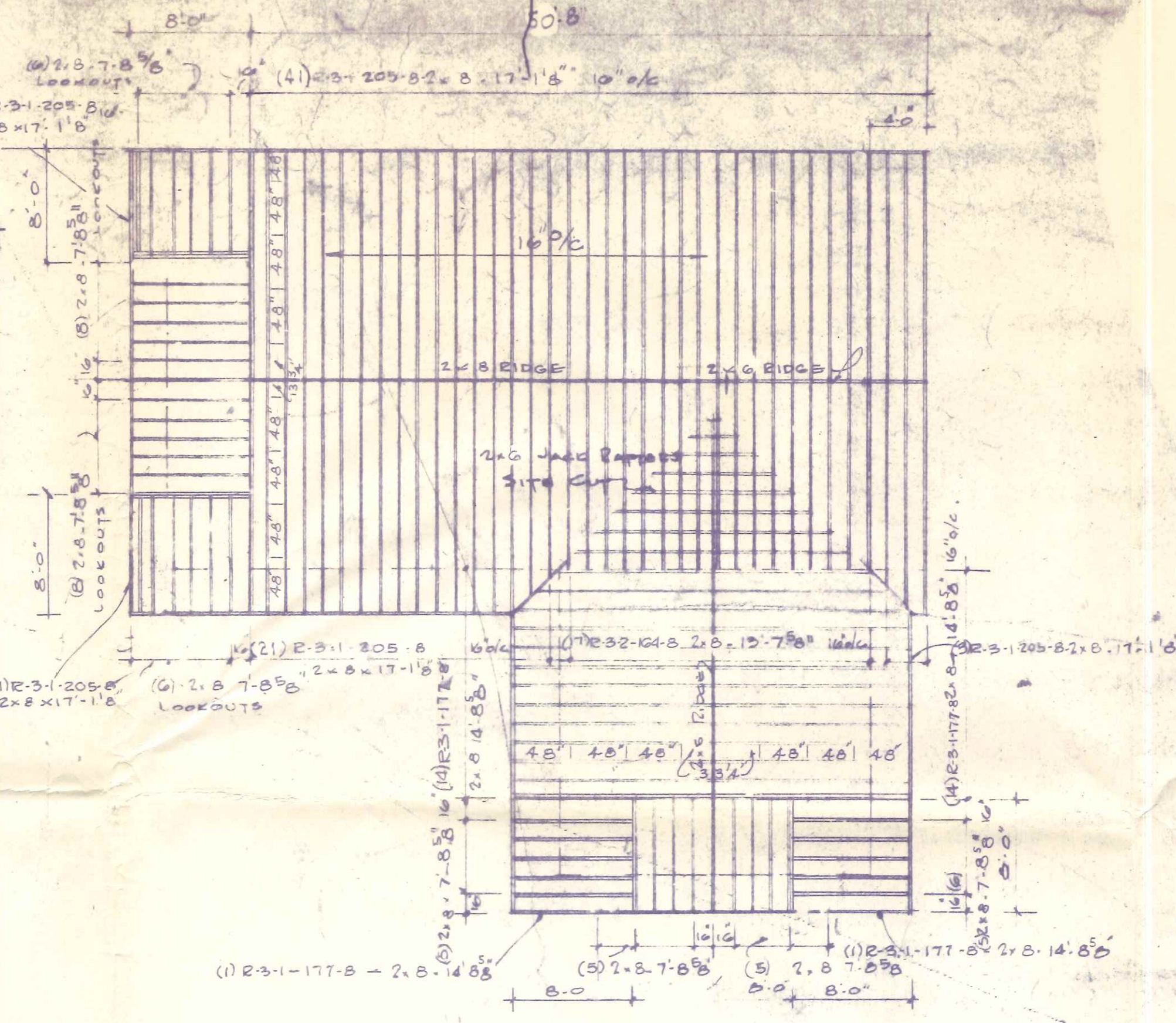
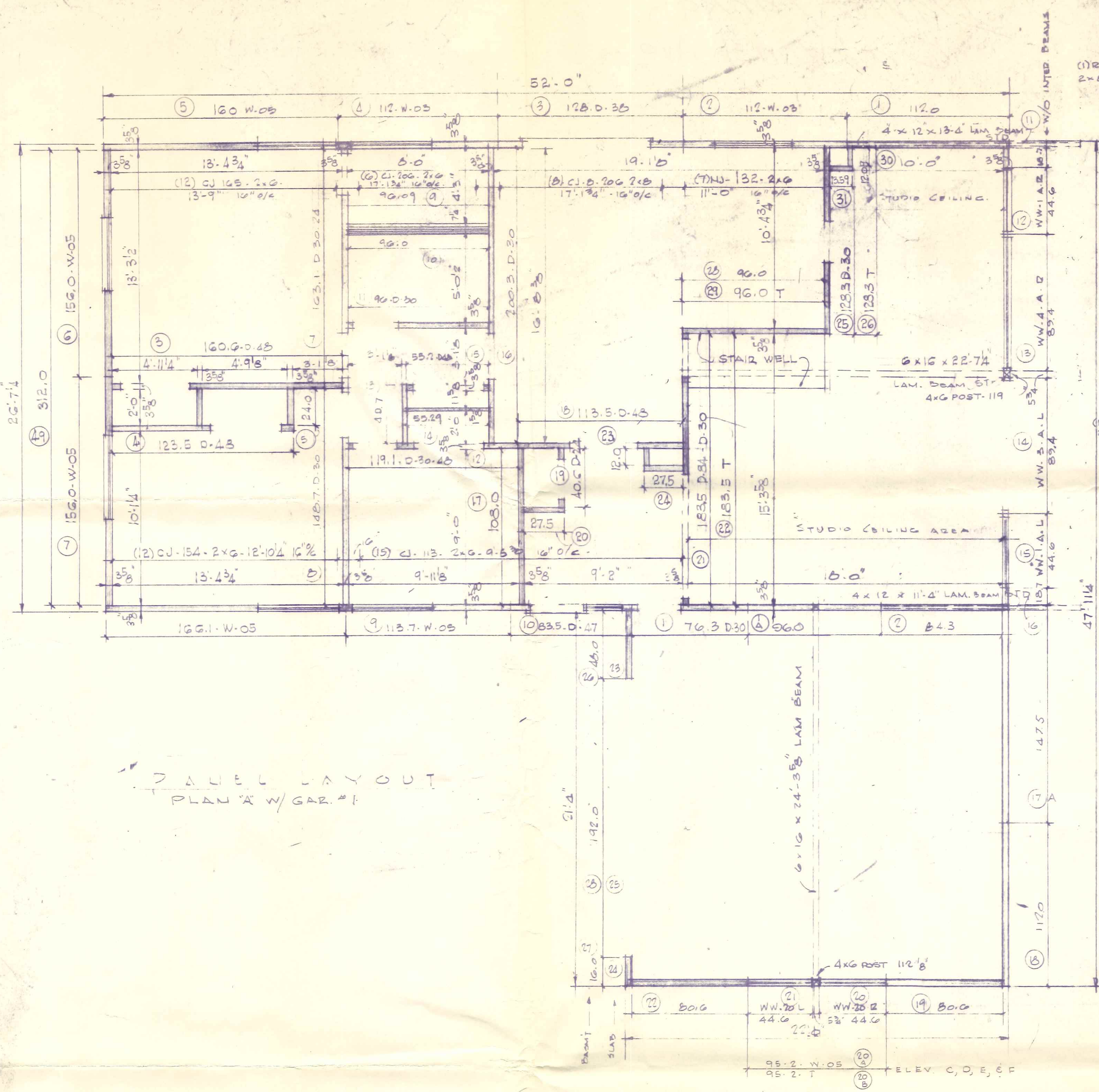


FLOOR JOIST LAYOUT
SCALE: 1/2" = 1'-0"

NOTE:
2x10 JOIST @ 16" O.C. DOUBLE JOIST UNDER ALL PARTITIONS RUNNING PARALLEL TO FLOOR JOIST

KAHLE BUILDERS # 19681

<p>NOTICE: Electrical, heating, and plumbing shown on plans are suggested layouts only and may have to be altered to meet local codes or conditions.</p> <p>Plans and specifications as drawn meet general F. H. A. and code requirements, but Scholz Homes, Inc., can not guarantee individual interpretation on such requirements in every area. Any modifications or changes which may be necessary to meet such requirements are at the builders responsibility and expense.</p>	<p>7-30-70 2-8-95</p> <p>Revised H.E. Side Vents 12" x 12" x 12" S.P.C.</p> <p>NO. DATE</p>	<p>1650 E.S.B.</p> <p>REMARKS</p>	<p>NORTH AMERICAN HOMES A DIVISION OF SCHOLZ HOMES, INC. 8001 N. Orchard, Celina, Ohio</p>	<p>21340</p> <p>DESIGN APPROVED</p>
	<p>REVISIONS</p> <p>COPYRIGHT BY SCHOLZ HOMES, INC.</p> <p>These plans, and the information herein, are the property of Scholz Homes, Inc., and reproduction, use, or disclosure thereof in whole or in part, without the written permission of Scholz Homes, Inc., is strictly prohibited. Changes of these plans and specifications, when given by Scholz Homes, Inc., shall be in writing and the drawings shall be amended to reflect the same.</p>		<p>CONSULTING ARCHITECTS</p>	<p>DATE</p> <p>SCALE</p>
	<p>CHECKED AND APPROVED</p>		<p>DATE</p>	<p>2</p>



12 AFTER LAYOUT ELEV #1 (PLAN A)
SCALE 1/8" = 1'-0"

PAVEMENT LAYOUT
PLAN A W/ GAR. #1

KAHLE BUILDERS #19681

NOTICE: Electrical, heating, and plumbing shown on plans are suggested layouts only and may have to be altered to meet local codes or conditions. Plans and specifications as drawn meet general F. H. A. and Code requirements, but Scholz Homes, Inc., can not guarantee individual interpretation on such requirements in every area. Any modifications or changes which may be necessary to meet such requirements are at the builders responsibility and expense.	DATE: 5/25/68 DRAWN BY: RFB CHECKED BY: JAC APPROVED BY: ESB	NORTH AMERICAN HOMES A DIVISION OF SCHOLZ HOMES, INC. 4001 N. Westwood, Colton 6, Ohio	21341 DESIGN APPROVED: [Signature] CHECKED: [Signature] DATE: [Signature] SCALE: [Signature]
	REVISIONS COPYRIGHT BY SCHOLZ HOMES, INC. These plans and the information shown herein are the property of Scholz Homes, Inc. and reproduction, use or disclosure thereof to unauthorized persons is strictly prohibited. Any modification or change to these plans without the written permission of Scholz Homes, Inc. is prohibited. Approval of these plans and specifications is conditional upon their use in accordance with the contract, which shall be void without the additional written consent.	CONSULTING ARCHITECTS [Signature]	DATE: [Signature]